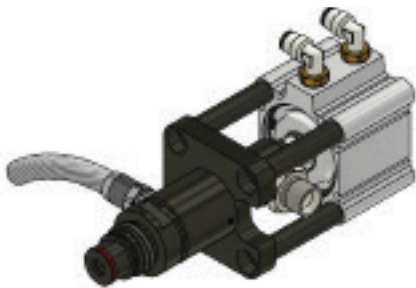


## DATASHEET

# INJECTION VALVES



## KEY FEATURES

- Connection between CIJECT equipment and to an inlet port of a typical closed mould.
- Vacuum tight sealing of a closed mould.
- Straightforward isolation of the mould cavity.
- Easily cleaned as part of normal injection machine flush cycle.
- Automated process and reduces the need for operator intervention.
- Careful design and positioning of the material ports allows use in deep mould structures with limited access.
- Robust construction and highest quality components ensures excellent reliability with ranging resin types under the hardest conditions.
- Ability to disconnect from CIJECT equipment once cleaned.

# INJECTION VALVES

## EQUIPMENT VERSIONS

All versions include corresponding spares kit.

Standard Options	Description	Product Number
<b>Standard Version</b>	Suitable for typical polyester/vinylester and epoxy resin systems.	XE-0015-01 + SK
<b>High Temperature Version</b>	Suitable for typical polyester/vinylester and epoxy resin systems. Includes torlon sealing tip, stainless steel shaft and high temperature air cylinder.  For use at temperatures up to 150°C (continuous use) or 180°C (short term use).	XE-0015-02 + SK
<b>Stainless Steel Shaft Version</b>	Provides a robust alternative to the standard shaft if regular dismantling is required.	XE-0015-03 + SK
<b>Stainless Steel Body Version</b>	All components in contact with resin material are machined stainless steel.	XE-0015-04 + SK

## EQUIPMENT OPTIONS

Other specifications are available upon request..

Standard Options	Description	Product Number
<b>Infusion 'Nose' Inlet</b>	1/2" BSPPF outlet for connection to infusion inlet.	OPT-06
<b>Resin Inlet Hose: 0.5 m</b>		OPT-10
<b>Resin Inlet Hose: 1.0 m</b>		OPT-11
<b>Resin Inlet Hose: 1.5 m</b>		OPT-12
<b>Resin Inlet Hose: 1.8 m</b>		OPT-13
<b>Brass Quick Couple Connector</b>	<b>Connection for resin inlet hose. Connects the injection valve to the CIJECT machine mix-head.</b>	OPT-20
<b>Stainless Steel Quick Couple Connector</b>	<b>Connection for resin inlet hose. Connects the injection valve to the CIJECT machine mix-head.</b>	OPT-21
<b>Control Valve and Fittings</b>	Pneumatically actuated. The control valve powers the injection valve open/close from CIJECT equipment.	OPT-25

# INJECTION VALVES

## TECHNICAL SPECIFICATION

General	
Housing Material	Machined from steel and treated to provide a hardened and corrosion resistant surface
Maximum Operating Temperature: Standard Version	80°C
Maximum Operating Temperature: High Temperature Version	180°C
Nominal Service	1 calendar year

## Dimensions

